

Lot 510
57 Kingston Avenue
Gables NSW 2765

4  2.5  2 



Artist impression

House Type	Elevation	House Size	Land Size
SW50 2BT	F4	335m ²	450m ²

FIXED House & Land Package Price

\$1,896,000

Key Inclusions

- Main entry door by YKK with keyless entry
- 40mm Caesarstone benchtops with waterfall edge to kitchen island and butler pantry
- Fisher & Paykel appliances including dishwasher and microwave
- Parisi fixtures and fittings throughout
- Four zone ducted air conditioning, smart phone connectivity
- LED downlights throughout, feature eave lights to facade, smart device connectivity by Legrand
- Flyscreens to all operable windows
- Colorbond roof with roof ventilation system
- Landscaped front and rear yards, gardens to front, fence to boundaries, letterbox and clothesline
- Colour through finished driveway
- Frameless shower screens
- Light filled void
- Large alfresco

Specification - SHAWOOD Gen III

Included upgrade packages - Elegance, Excellence

Location

This SHAWOOD home is set within the Gables masterplan community in Sydney's Hills district. Gables offers a relaxed, contemporary lifestyle surrounded by nature and leafy neighbourhood streets, close to transport, schools and a new shopping and entertainment precinct.

SHAWOOD

House Type
SW50 2BT

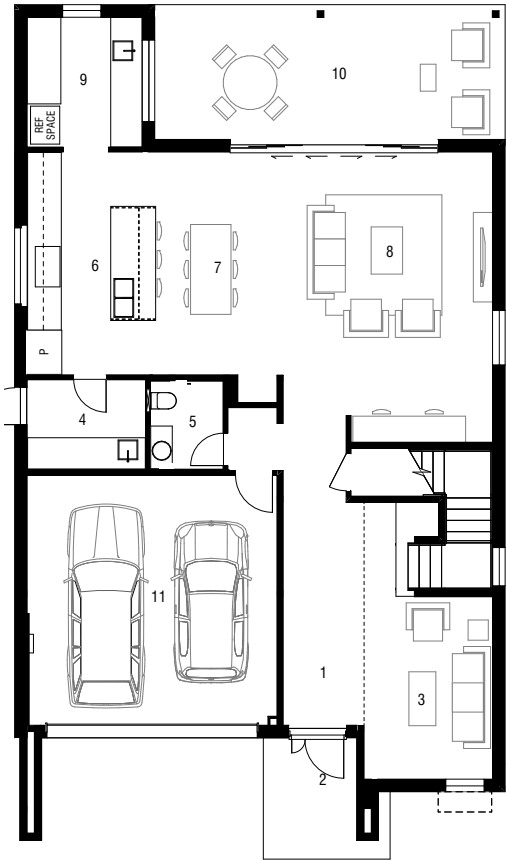
4  2.5  2 

Ground Floor

- 1 Entry
- 2 Porch 2.10 x 2.70
- 3 Lounge 2.88 x 4.08
- 4 Laundry 2.66 x 2.01
- 5 Powder 1.63 x 2.01
- 6 Kitchen 3.00 x 4.98
- 7 Dining 3.30 x 4.98
- 8 Family 3.30 x 6.48
- 9 Butler 2.66 x 2.91
- 10 Alfresco 7.80 x 3.00
- 11 Garage 5.58 x 5.58

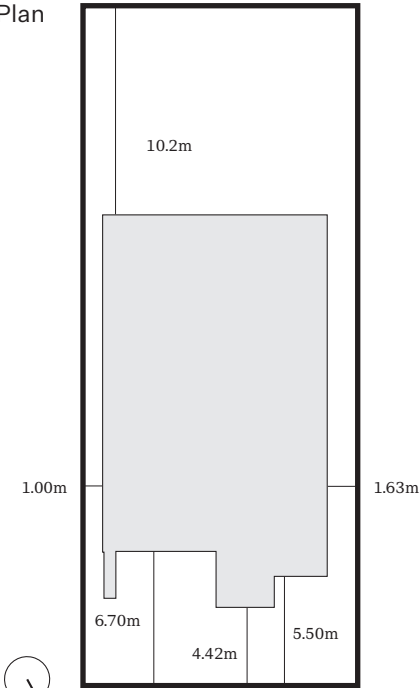
First Floor

- 12 Principal Suite 3.87 x 4.08
- 13 Ensuite 2.01 x 5.00
- 14 Bed 2 3.30 x 4.10
- 15 Bed 3 3.48 x 3.34
- 16 Bed 4 3.40 x 3.07
- 17 Bath 3.00 x 1.98
- 18 Retreat 5.61 x 3.79
- 19 WC 1.73 x 1.27

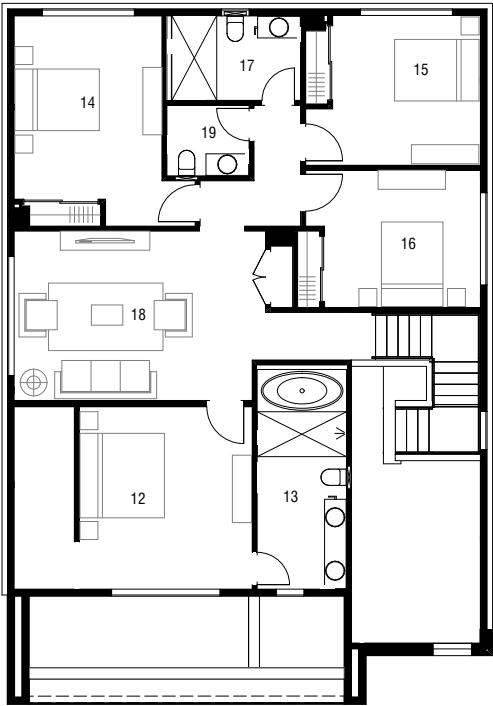


Ground Floor

Site Plan



Kingston Avenue



First Floor