

# Lumia

Phase 1

## 1 BEDROOM

🛏️ 1 🚿 1 🚗 1

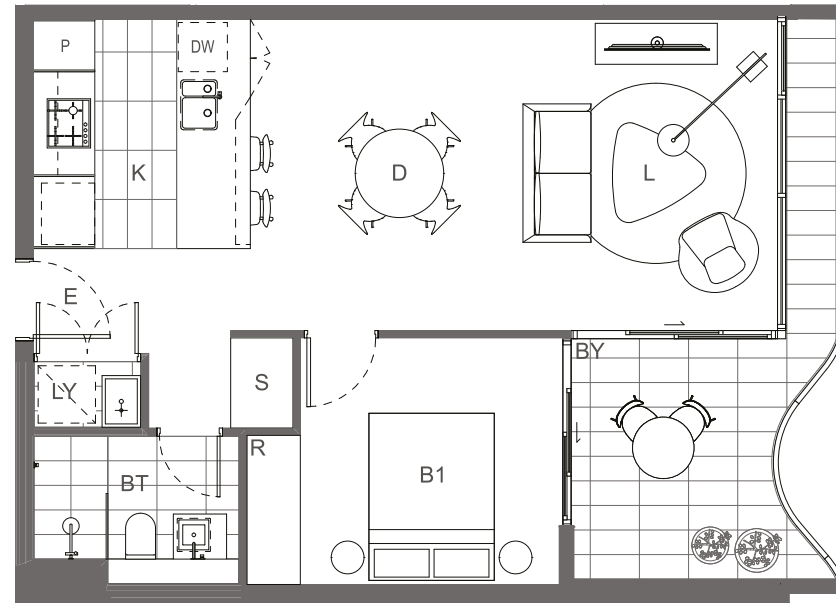
Apartment: 311, 411, 511, 611, 711, 811, 911, 1011, 1110, 1210

|               |                  |
|---------------|------------------|
| Internal Area | 54m <sup>2</sup> |
| External Area | 10m <sup>2</sup> |
| Total Area    | 64m <sup>2</sup> |



### Key

|           |             |            |              |
|-----------|-------------|------------|--------------|
| <b>B1</b> | Bedroom 1   | <b>K</b>   | Kitchen      |
| <b>B2</b> | Bedroom 2   | <b>LY</b>  | Laundry      |
| <b>B3</b> | Bedroom 3   | <b>L</b>   | Living       |
| <b>B4</b> | Bedroom 4   | <b>P</b>   | Pantry       |
| <b>BT</b> | Bathroom    | <b>PL</b>  | Planter      |
| <b>BY</b> | Balcony     | <b>R</b>   | Robe         |
| <b>D</b>  | Dining      | <b>S</b>   | Store        |
| <b>DW</b> | Dishwasher  | <b>ST</b>  | Study        |
| <b>EN</b> | Ensuite     | <b>TC</b>  | Terrace      |
| <b>E</b>  | Entry       | <b>WIR</b> | Walk-in Robe |
| <b>FS</b> | Flexi Space |            |              |



Disclaimer: The particulars are set out as a general outline for the guidance of intending purchasers and do not constitute an offer or contract. All descriptions, dimensions, references to conditions and necessary permutations for use and other details are given in good faith and are believed to be correct, but any intending purchasers should not rely on them as statements or representations of fact, but must satisfy themselves by inspection or otherwise to the correctness of each item, and where necessary seek advice. No third party supplier or their agents has any authority to make or give any representations or warranty in relation to this property. \*External areas may be larger for courtyard apartments. Refer to the detailed area schedule.