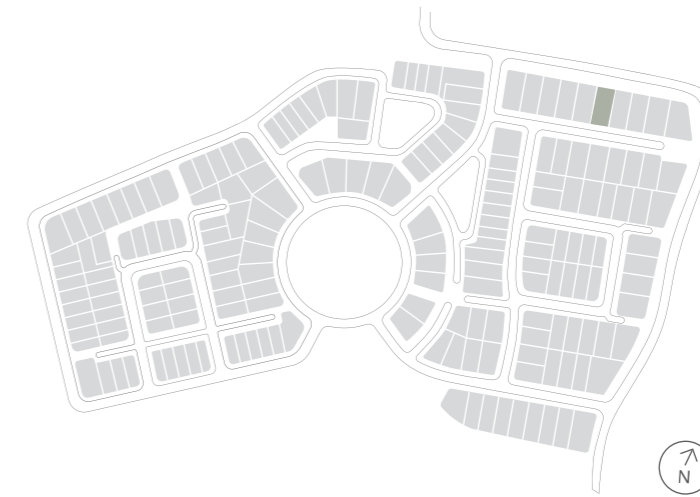


House Type NE07A


NORMAN ESTATES
AT GLEDSDOOD HILLS

Why live
without?



Lot 16 Hewitson Court
Gledswood Hills

Lot 16 Hewitson Court Gledswood Hills



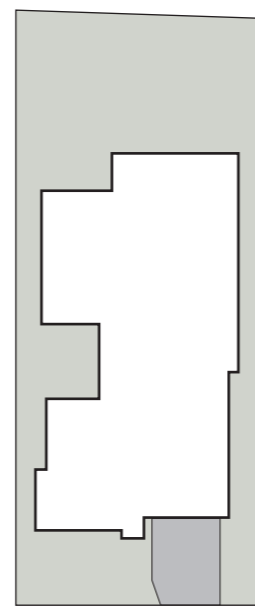
House Type NE07A F1

4 2 2

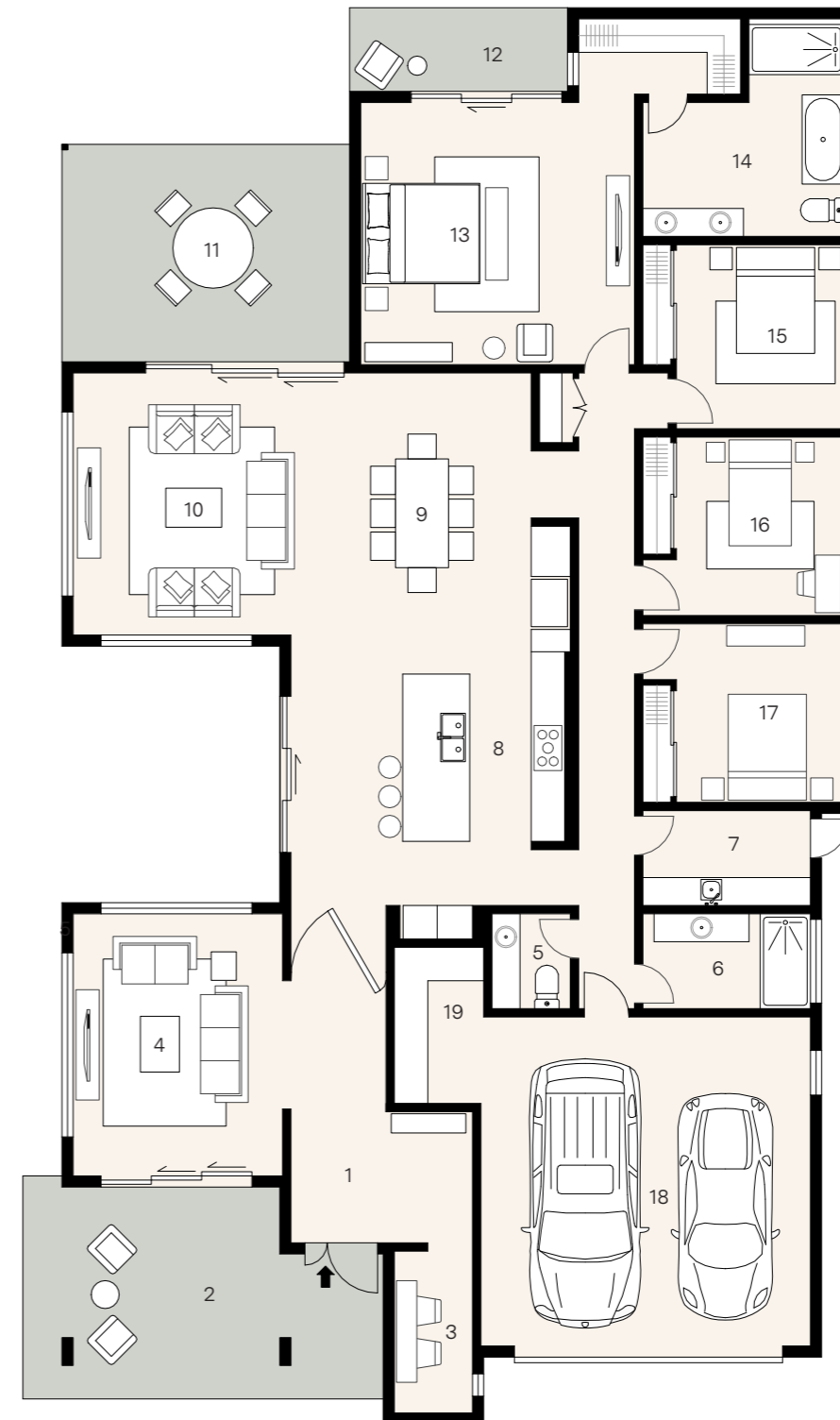
House size 305m² — Land size 660m²

At Norman Estates, a curated collection of elegant SHAWOOD homes pair human-centric design and ingenious engineering for ultimate liveability. These homes have been designed by Sekisui House to work in harmony with each other and the surrounding landscape.

This unique home features an intuitive floorplan that maximises movement between the integrated living zones and generous outdoor alfresco area. An intelligent combination of form and function, this generously proportioned single storey home has been luxuriously appointed with premium appliances and finishes. Striking architectural features such as an oversized internal timber pivot door and flawless square set finished ceilings take this family home to another level.



Hewitson Court



1.	Entry	
2.	Porch	6.3 x 3.8
3.	Study	1.4 x 2.9
4.	Lounge	3.8 x 4.7
5.	Powder	1.4 x 1.7
6.	Bath	3.0 x 1.7
7.	Laundry	3.0 x 1.7
8.	Kitchen	4.3 x 4.8
9.	Dining	4.3 x 4.7
10.	Living	3.9 x 4.7
11.	Alfresco	5.1 x 3.9
12.	Verandah	3.9 x 1.5
13.	Principal	4.9 x 4.7
14.	Ensuite	3.6 x 3.9
15.	Bed 2	3.0 x 3.3
16.	Bed 3	3.0 x 3.2
17.	Bed 4	3.0 x 3.2
18.	Garage	5.9 x 5.9
19.	Workshop	1.7 x 2.8