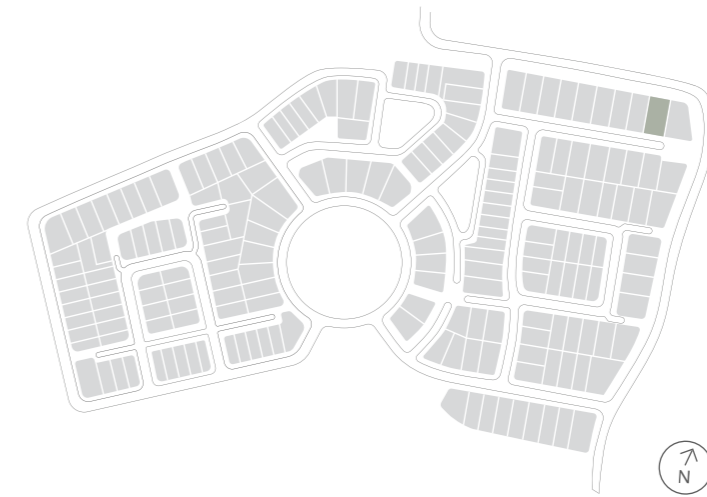


House Type NE08A

  
NORMAN ESTATES  
AT GLEDSDOOD HILLS

Why live  
without?



Lot 19 Hewitson Court  
Gledswood Hills

# Lot 19 Hewitson Court Gledswood Hills



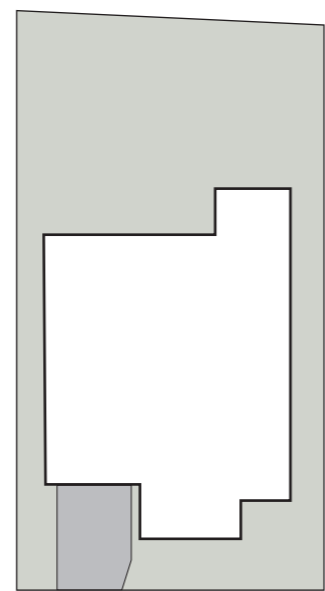
## House Type NE08A F4

4 2 2

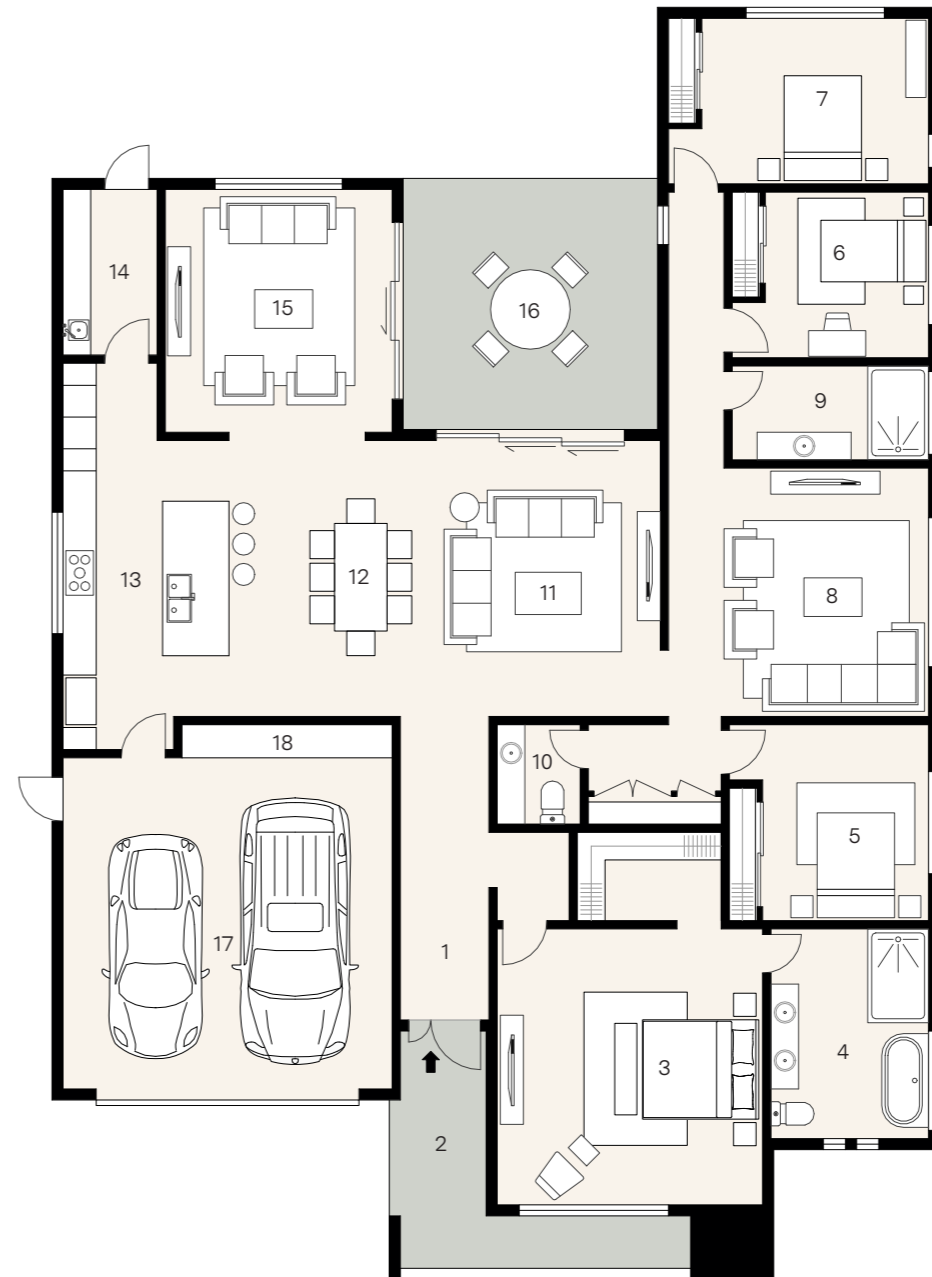
House size 298m<sup>2</sup> — Land size 744m<sup>2</sup>

At Norman Estates, a curated collection of elegant SHAWOOD homes pair human-centric design and ingenious engineering for ultimate liveability. These homes have been designed by Sekisui House to work in harmony with each other and the surrounding landscape.

This unique home features an intuitive floorplan that maximises movement between the integrated living zones and generous outdoor alfresco area. An intelligent combination of form and function, this generously proportioned single storey home has been luxuriously appointed with premium appliances and finishes. Striking architectural features such as flawless square set finished ceilings take this family home to another level.



Hewitson Court



1.	Entry	
2.	Porch	1.9 x 4.3
3.	Principal	4.7 x 5.0
4.	Ensuite	2.8 x 3.8
5.	Bed 2	3.0 x 3.1
6.	Bed 3	3.5 x 3.0
7.	Bed 4	4.1 x 3.0
8.	Family	4.7 x 4.5
9.	Bath	3.6 x 1.7
10.	Powder	1.5 x 1.8
11.	Living	4.7 x 5.0
12.	Dining	3.0 x 5.0
13.	Kitchen	3.0 x 7.0
14.	Laundry	1.7 x 3.0
15.	Lounge	4.1 x 4.4
16.	Alfresco	4.3 x 4.6
17.	Garage	5.9 x 6.4
18.	Workshop	3.0 x 0.6