

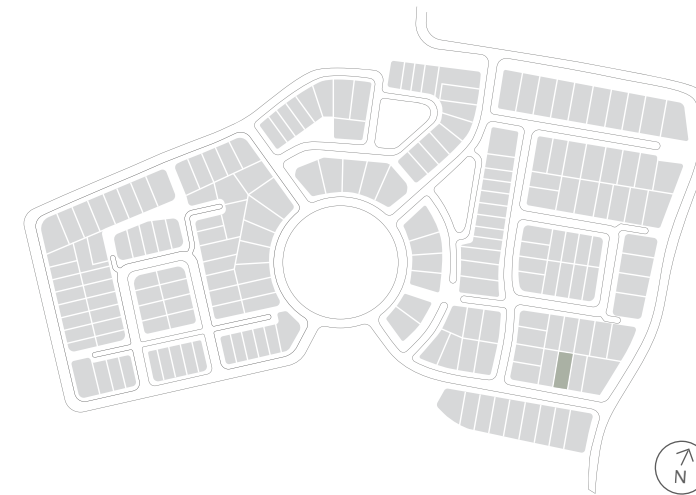
House Type NE37



NORMAN ESTATES

AT GLEDSDOOD HILLS

Why live
without?



Lot 40 Florian Boulevard
Gledswood Hills

Lot 40 Florian Boulevard Gledswood Hills



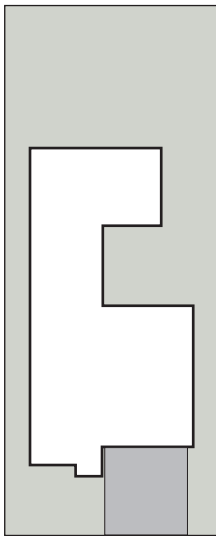
House Type NE37 F6

4 2 2

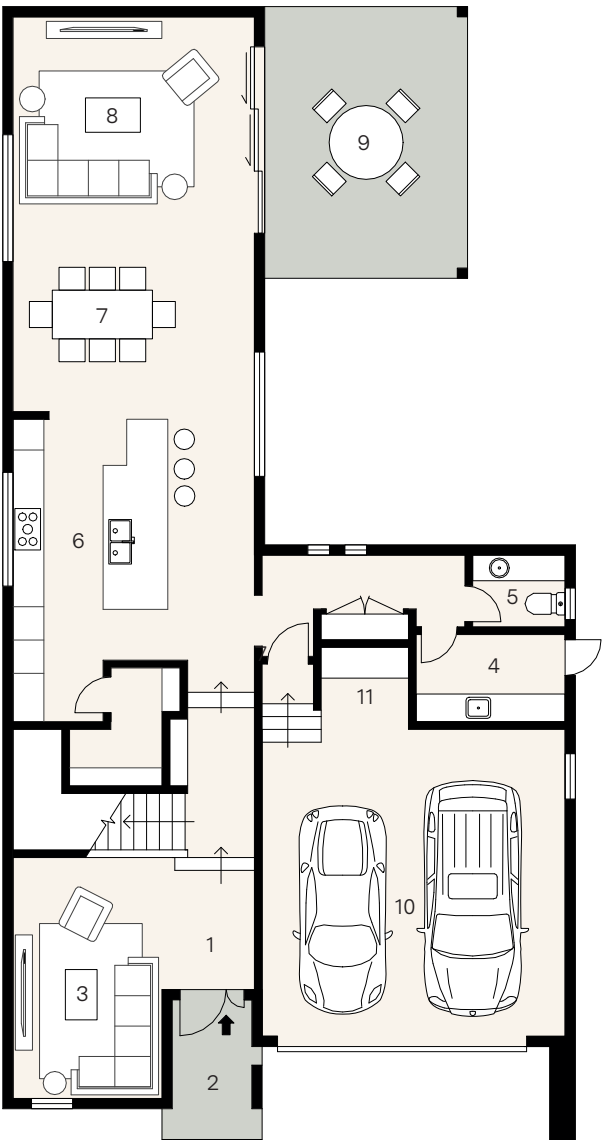
House size 366m² — Land size 490m²

At Norman Estates, a curated collection of elegant SHAWOOD homes pair human-centric design and ingenious engineering for ultimate liveability. These homes have been designed by Sekisui House to work in harmony with each other and the surrounding landscape.

Set across two expansive levels, this unique home intelligently combines form and function with an intuitive floorplan that maximises movement between the integrated living zones and generous outdoor alfresco area. Distinctive architectural features such as a soaring light-filled void finished with flawless square set cornices provide an elevated aesthetic rarely experienced. Luxuriously appointed with premium appliances and finishes, this is a home that has been built for a lifetime of comfort, health and wellbeing.

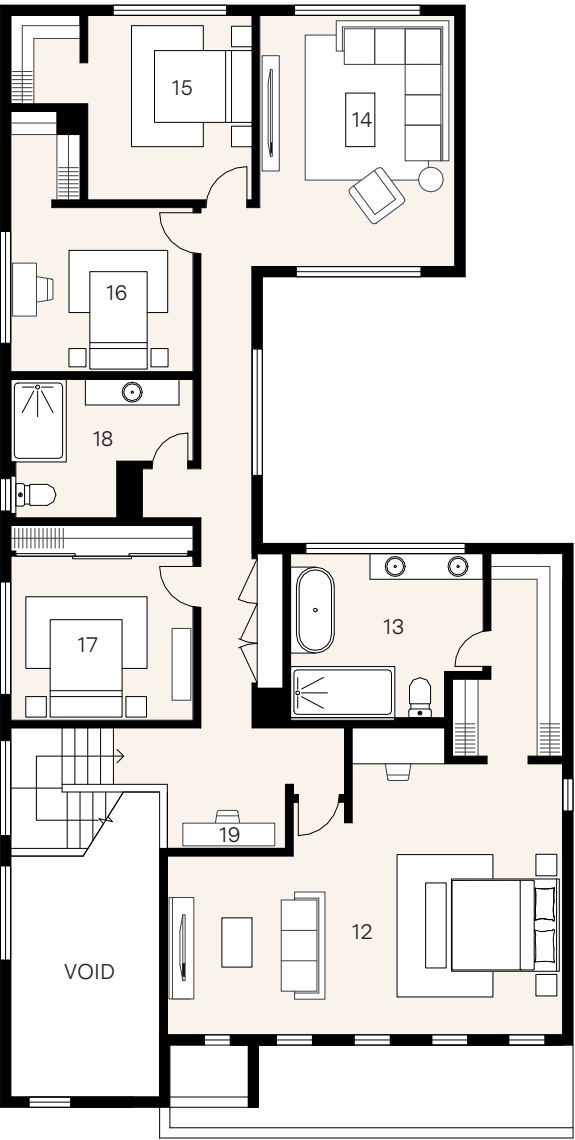


Florian Boulevard



Ground floor

- | | | |
|-----|----------|-----------|
| 1. | Entry | |
| 2. | Porch | 2.7 x 1.6 |
| 3. | Lounge | 2.9 x 4.7 |
| 4. | Laundry | 2.9 x 1.7 |
| 5. | Powder | 1.8 x 1.4 |
| 6. | Kitchen | 3.3 x 5.9 |
| 7. | Dining | 4.7 x 3.0 |
| 8. | Living | 4.7 x 4.7 |
| 9. | Alfresco | 3.9 x 5.3 |
| 10. | Garage | 5.9 x 5.9 |
| 11. | Workshop | 1.8 x 1.6 |



First floor

- | | | |
|-----|-----------|-----------|
| 12. | Principal | 7.8 x 5.3 |
| 13. | Ensuite | 3.7 x 3.1 |
| 14. | Retreat | 3.8 x 5.0 |
| 15. | Bed 2 | 3.2 x 3.6 |
| 16. | Bed 3 | 3.6 x 3.2 |
| 17. | Bed 4 | 3.6 x 3.2 |
| 18. | Bath | 3.5 x 2.8 |
| 19. | Study | 2.3 x 1.2 |