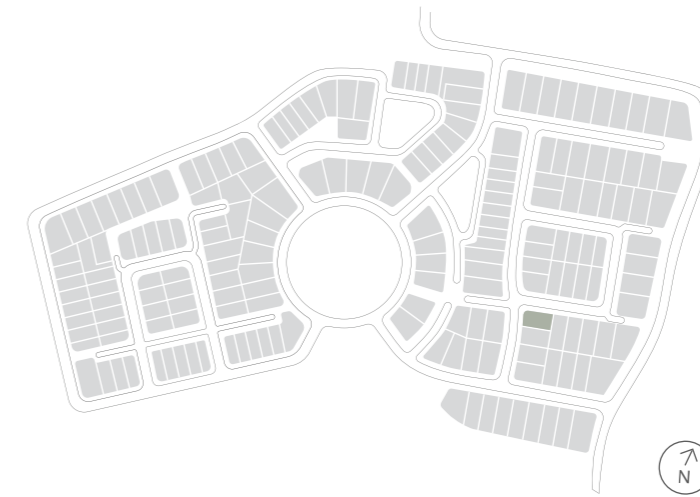


House Type NE45


NORMAN ESTATES
AT GLEDSDOOD HILLS

Why live
without?



Lot 45 Jamiesons Avenue
Gledswood Hills

Lot 45 Jamiesons Avenue Gledswood Hills

SHAWOOD



Artist impression

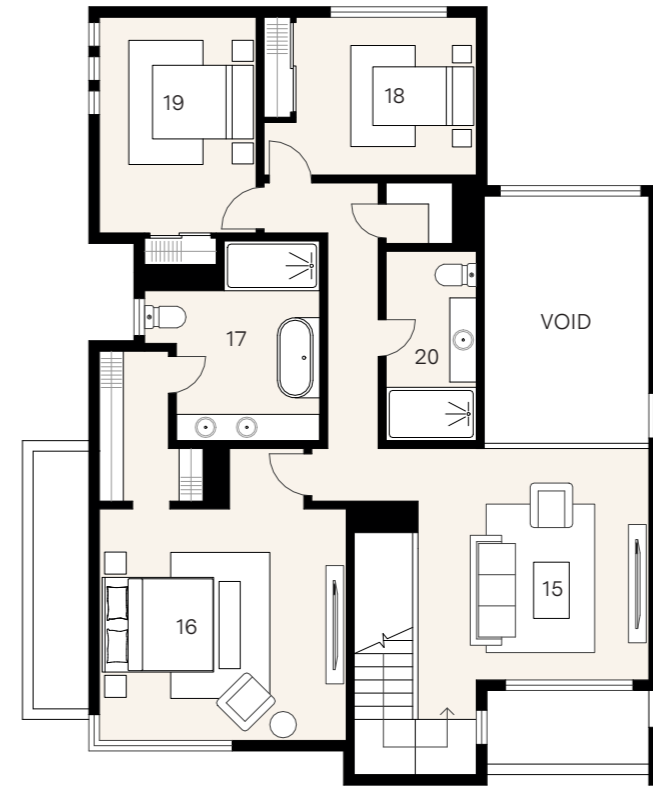
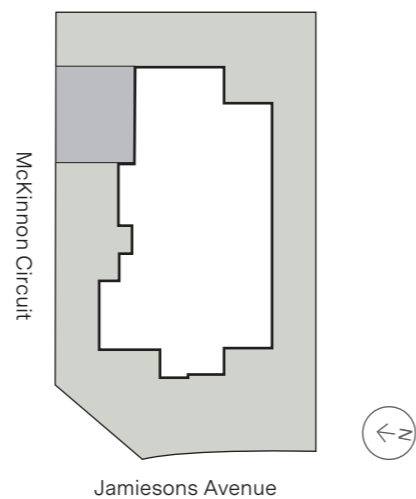
House Type NE45 F2

4 3 2

House size 336m² — Land size 532m²

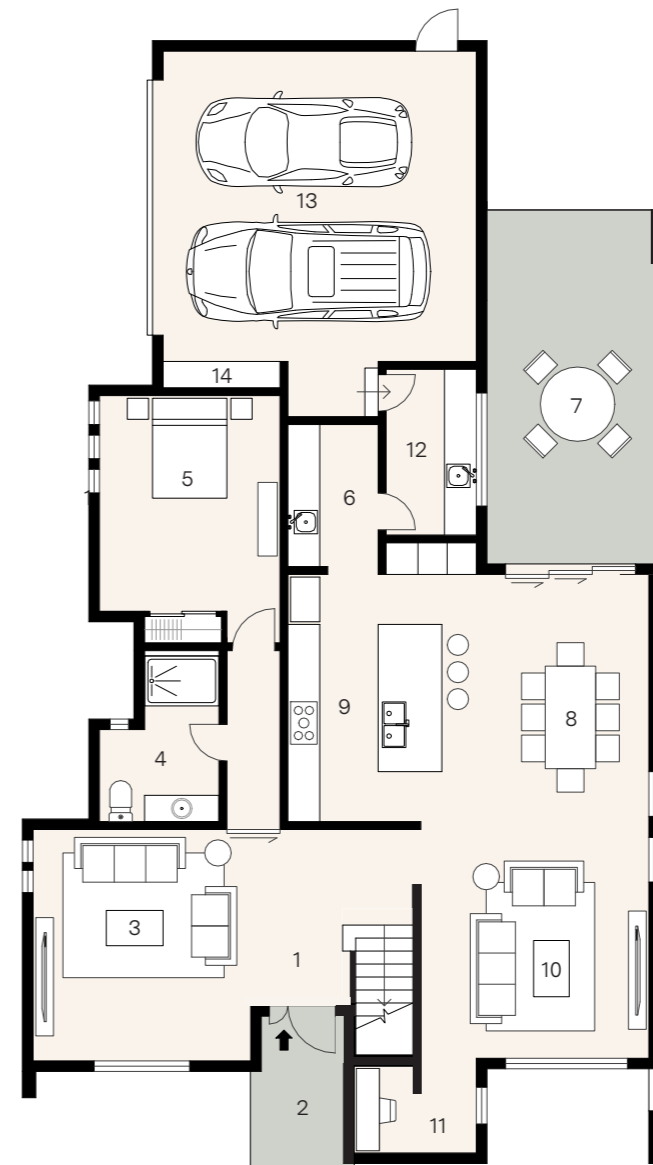
At Norman Estates, a curated collection of elegant SHAWOOD homes pair human-centric design and ingenious engineering for ultimate liveability. These homes have been designed by Sekisui House to work in harmony with each other and the surrounding landscape.

Set across two expansive levels, this unique SHAWOOD home intelligently combines form and function with an intuitive floorplan that maximises movement between the integrated living zones and generous outdoor alfresco area. Distinctive architectural features such as a soaring light-filled void finished with flawless square set cornices provide an elevated aesthetic rarely experienced. Luxuriously appointed with premium appliances and finishes, this is a home that has been built for a lifetime of comfort, health and wellbeing.



First floor

15. Retreat	3.3 x 4.4
16. Principal	4.7 x 4.4
17. Ensuite	2.7 x 3.8
18. Bed 2	3.0 x 4.1
19. Bed 3	3.4 x 3.0
20. Bath	1.7 x 3.6



Ground floor

1. Entry	
2. Porch	1.9 x 2.9
3. Lounge	4.1 x 4.4
4. Bath	2.3 x 3.1
5. Bed 4	3.4 x 4.1
6. Butler's Pantry	1.7 x 2.7
7. Alfresco	6.9 x 3.3
8. Dining	3.9 x 4.7
9. Kitchen	2.9 x 4.7
10. Living	4.4 x 4.5
11. Study	2.3 x 1.8
12. Laundry	1.7 x 3.1
13. Garage	5.9 x 5.9
14. Workshop	2.2 x 0.5