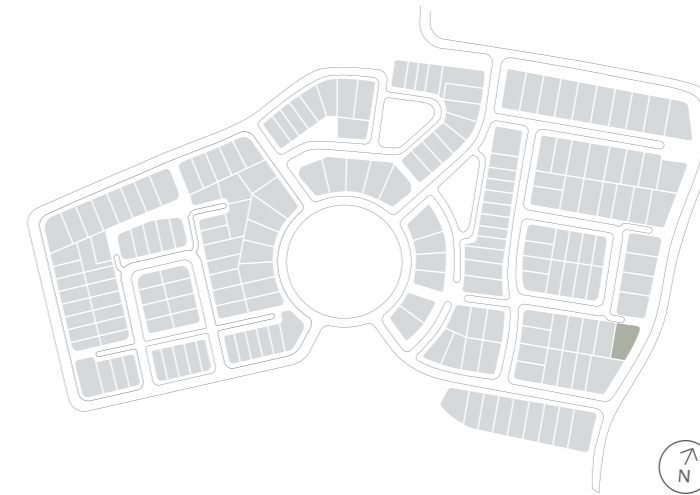


House Type NE28


NORMAN ESTATES
AT GLEDSDOOD HILLS

Why live
without?



Lot 50 McKinnon Circuit
Gledswood Hills

Lot 50 McKinnon Circuit Gledswood Hills



Artist impression

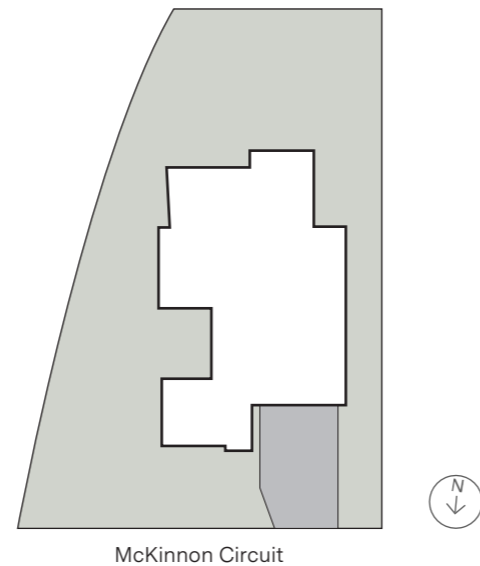
House Type NE28 F1

5 3 2

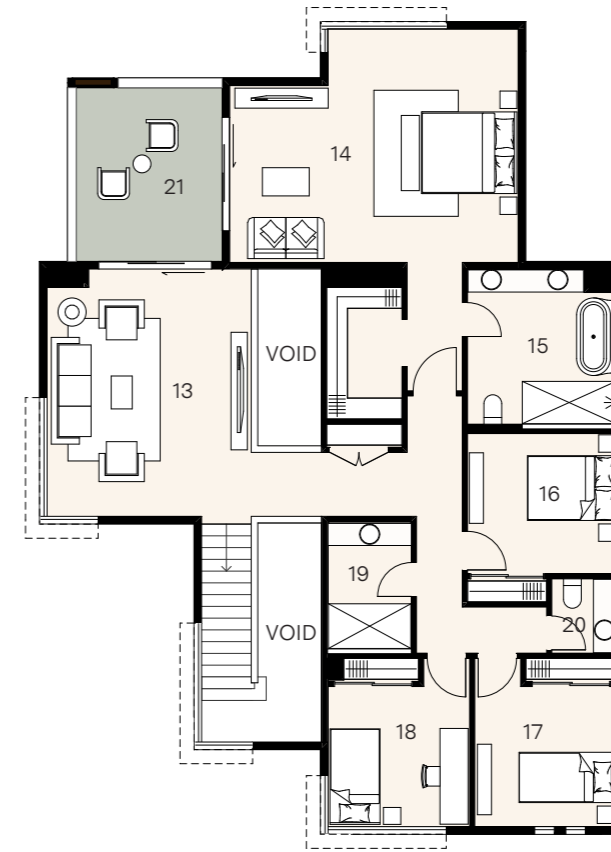
House size 363m² — Land size 703m²

At Norman Estates, a curated collection of elegant SHAWOOD homes pair human-centric design and ingenious engineering for ultimate liveability. These homes have been designed by Sekisui House to work in harmony with each other and the surrounding landscape.

Set across two expansive levels, this unique home intelligently combines form and function with an intuitive floorplan that maximises movement between the integrated living zones and generous outdoor alfresco area. Distinctive architectural features such as soaring light-filled voids finished with flawless square set cornices provide an elevated aesthetic rarely experienced. Luxuriously appointed with premium appliances and finishes, this is a home that has been built for a lifetime of comfort, health and wellbeing.

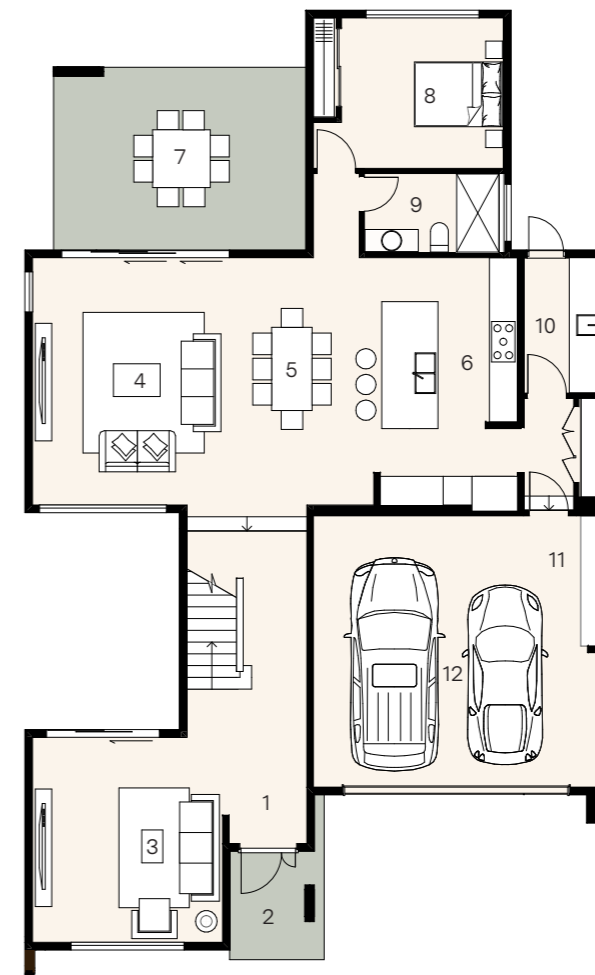


McKinnon Circuit



First floor

13. Retreat	4.4 x 5.3
14. Principal	6.2 x 5.0
15. Ensuite	3.2 x 3.3
16. Bed 2	3.2 x 3.0
17. Bed 3	3.0 x 3.0
18. Bed 4	3.0 x 3.0
19. Bath	1.8 x 2.7
20. Powder	1.4 x 1.6
21. Balcony	3.1 x 3.7



Ground floor

1. Entry	
2. Porch	2.3 x 2.0
3. Lounge	4.4 x 4.1
4. Living	5.3 x 4.0
5. Dining	5.3 x 3.4
6. Kitchen	5.3 x 2.9
7. Alfresco	3.9 x 5.4
8. Bed 5	3.2 x 3.5
9. Bath	1.7 x 2.9
10. Laundry	2.9 x 1.7
11. Workshop	5.8 x 0.3
12. Garage	5.8 x 5.9