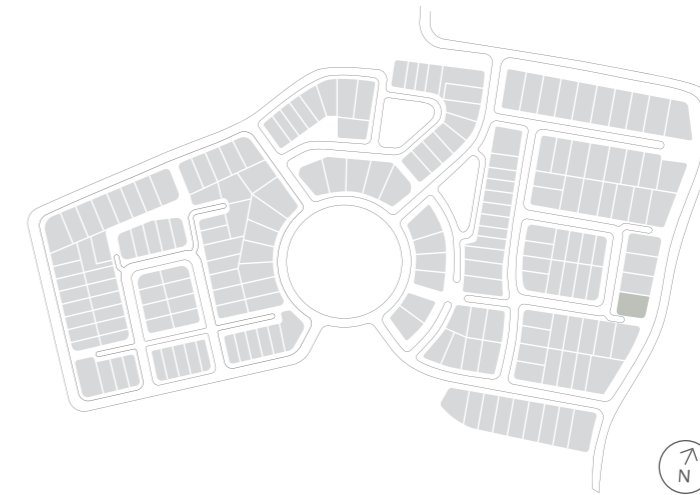


House Type NE07B


NORMAN ESTATES
AT GLEDSDOOD HILLS

Why live
without?



Lot 51 McKinnon Circuit
Gledswood Hills

Lot 51 McKinnon Circuit Gledswood Hills



Artist impression

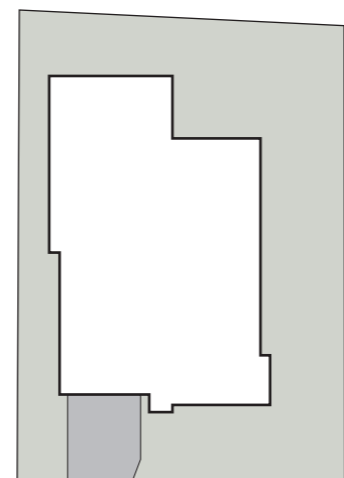
House Type NE07B F1

4 2 2

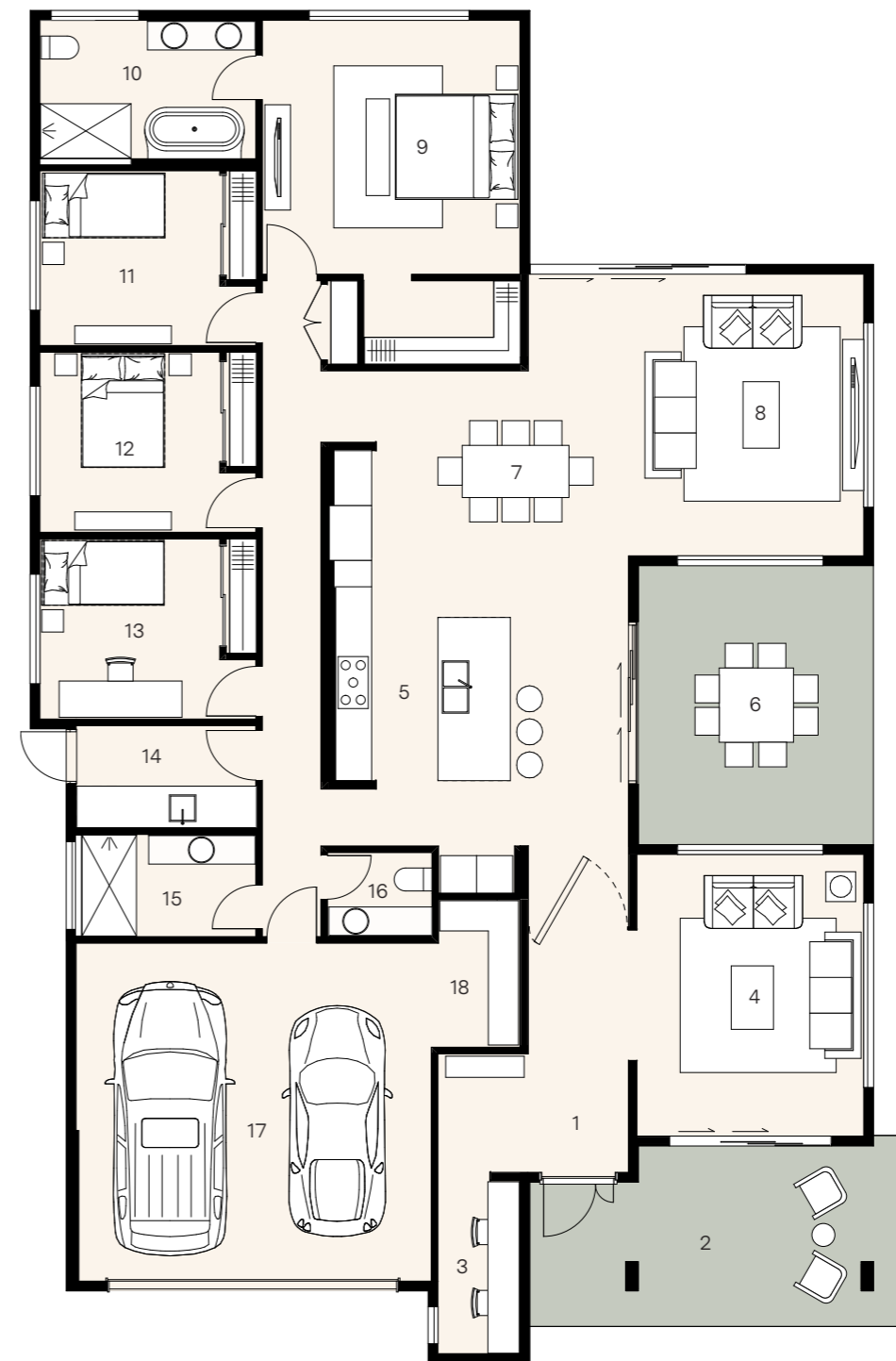
House size 274m² — Land size 656m²

At Norman Estates, a curated collection of elegant SHAWOOD homes pair human-centric design and ingenious engineering for ultimate liveability. These homes have been designed by Sekisui House to work in harmony with each other and the surrounding landscape.

This unique home features an intuitive floorplan that maximises movement between the integrated living zones and generous outdoor alfresco area. An intelligent combination of form and function, this generously proportioned single storey home has been luxuriously appointed with premium appliances and finishes. Striking architectural features such as an oversized internal timber pivot door and flawless square set finished ceilings take this family home to another level.



McKinnon Circuit



- | | | |
|-----|-----------|-----------|
| 1. | Entry | |
| 2. | Porch | 3.0 x 6.3 |
| 3. | Study | 2.9 x 1.4 |
| 4. | Lounge | 4.7 x 3.8 |
| 5. | Kitchen | 6.5 x 3.2 |
| 6. | Alfresco | 4.6 x 3.9 |
| 7. | Dining | 3.1 x 4.2 |
| 8. | Living | 4.7 x 3.9 |
| 9. | Principal | 4.2 x 4.3 |
| 10. | Ensuite | 2.3 x 3.6 |
| 11. | Bed 2 | 2.9 x 3.0 |
| 12. | Bed 3 | 3.0 x 3.0 |
| 13. | Bed 4 | 3.0 x 3.0 |
| 14. | Laundry | 1.7 x 3.0 |
| 15. | Bath | 1.7 x 2.9 |
| 16. | Powder | 1.4 x 1.7 |
| 17. | Garage | 5.6 x 5.8 |
| 18. | Workshop | 2.4 x 1.5 |