

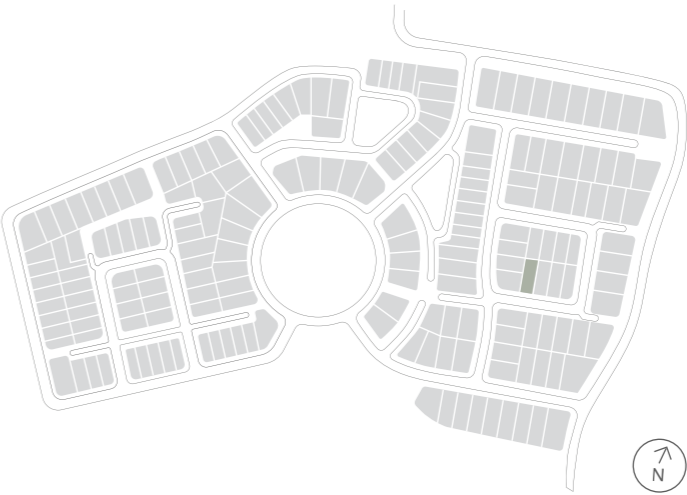
House Type NE24B



NORMAN ESTATES

AT GLEDSDOOD HILLS

Why live  
without?



Lot 63 McKinnon Circuit  
Gledswood Hills

# Lot 63 McKinnon Circuit Gledswood Hills



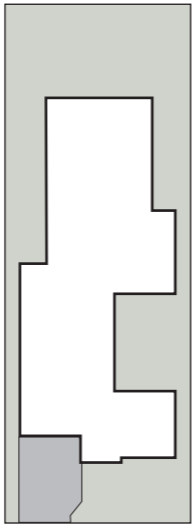
## House Type NE24B F3

4 2 2

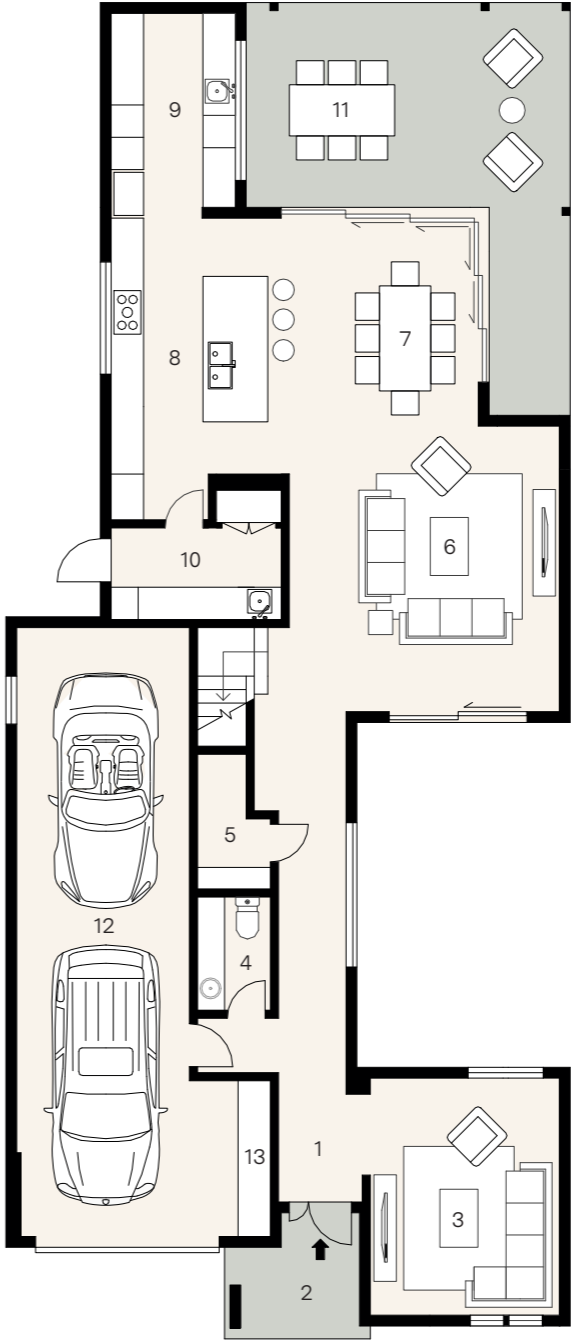
House size 333m<sup>2</sup> — Land size 438m<sup>2</sup>

At Norman Estates, a curated collection of elegant SHAWOOD homes pair human-centric design and ingenious engineering for ultimate liveability. These homes have been designed by Sekisui House to work in harmony with each other and the surrounding landscape.

Set across two expansive levels, this unique SHAWOOD home intelligently combines form and function with an intuitive floorplan that maximises movement between the integrated living zones and generous outdoor alfresco area. Distinctive architectural features such as a soaring light-filled void finished with flawless square set cornices provide an elevated aesthetic rarely experienced. Luxuriously appointed with premium appliances and finishes, this is a home that has been built for a lifetime of comfort, health and wellbeing.

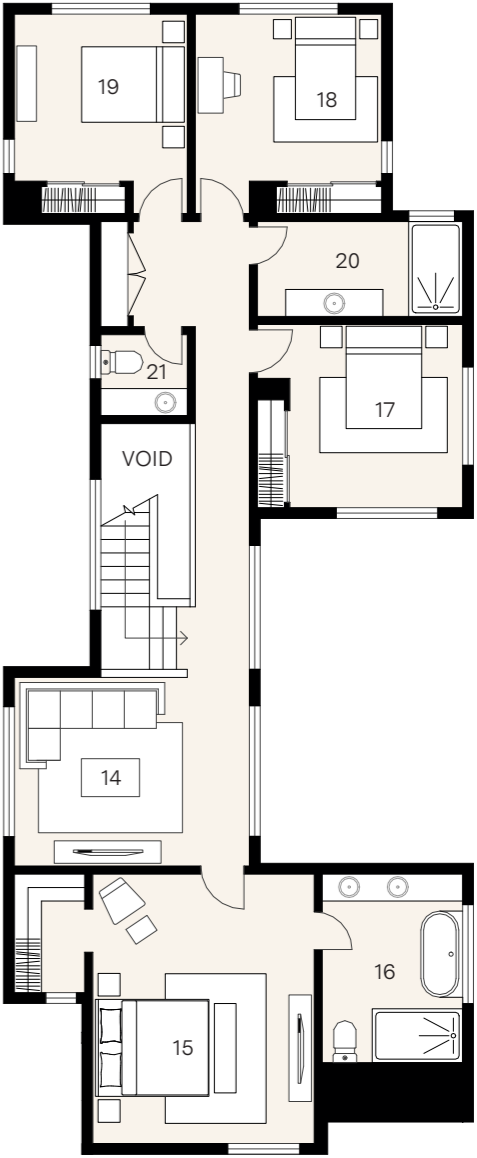


McKinnon Circuit



### Ground floor

- |     |                 |            |
|-----|-----------------|------------|
| 1.  | Entry           |            |
| 2.  | Porch           | 2.5 x 1.7  |
| 3.  | Lounge          | 3.5 x 4.4  |
| 4.  | Powder          | 1.4 x 2.1  |
| 5.  | Storage         | 1.4 x 2.5  |
| 6.  | Living          | 5.0 x 5.3  |
| 7.  | Dining          | 3.5 x 3.9  |
| 8.  | Kitchen         | 3.3 x 5.6  |
| 9.  | Butler's Pantry | 2.3 x 3.6  |
| 10. | Laundry         | 3.2 x 1.7  |
| 11. | Alfresco        | 6.0 x 3.6  |
| 12. | Garage          | 3.2 x 11.3 |
| 13. | Workshop        | 1.5 x 2.9  |



### First floor

- |     |           |           |
|-----|-----------|-----------|
| 14. | Retreat   | 4.4 x 3.5 |
| 15. | Principal | 4.1 x 5.0 |
| 16. | Ensuite   | 2.6 x 3.5 |
| 17. | Bed 2     | 3.2 x 3.4 |
| 18. | Bed 3     | 3.4 x 3.2 |
| 19. | Bed 4     | 3.3 x 3.2 |
| 20. | Bath      | 3.8 x 1.8 |
| 21. | Powder    | 1.6 x 1.7 |