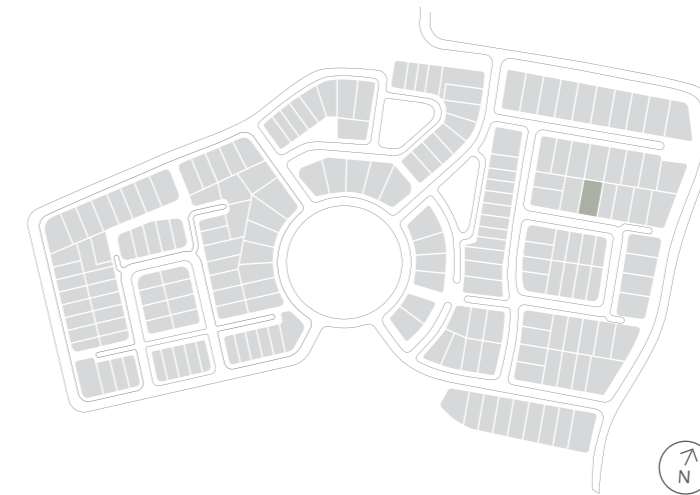


House Type NE08A

Why live
without?



Lot 71 McKinnon Circuit
Gledswood Hills

Lot 71 McKinnon Circuit Gledswood Hills



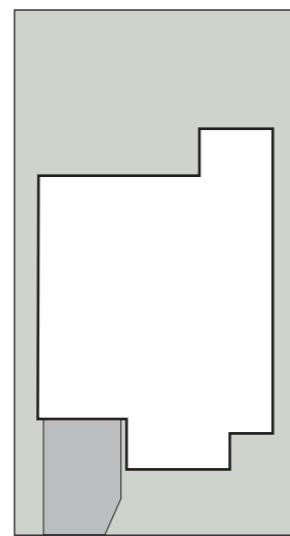
House Type NE08A F4

4 2 2

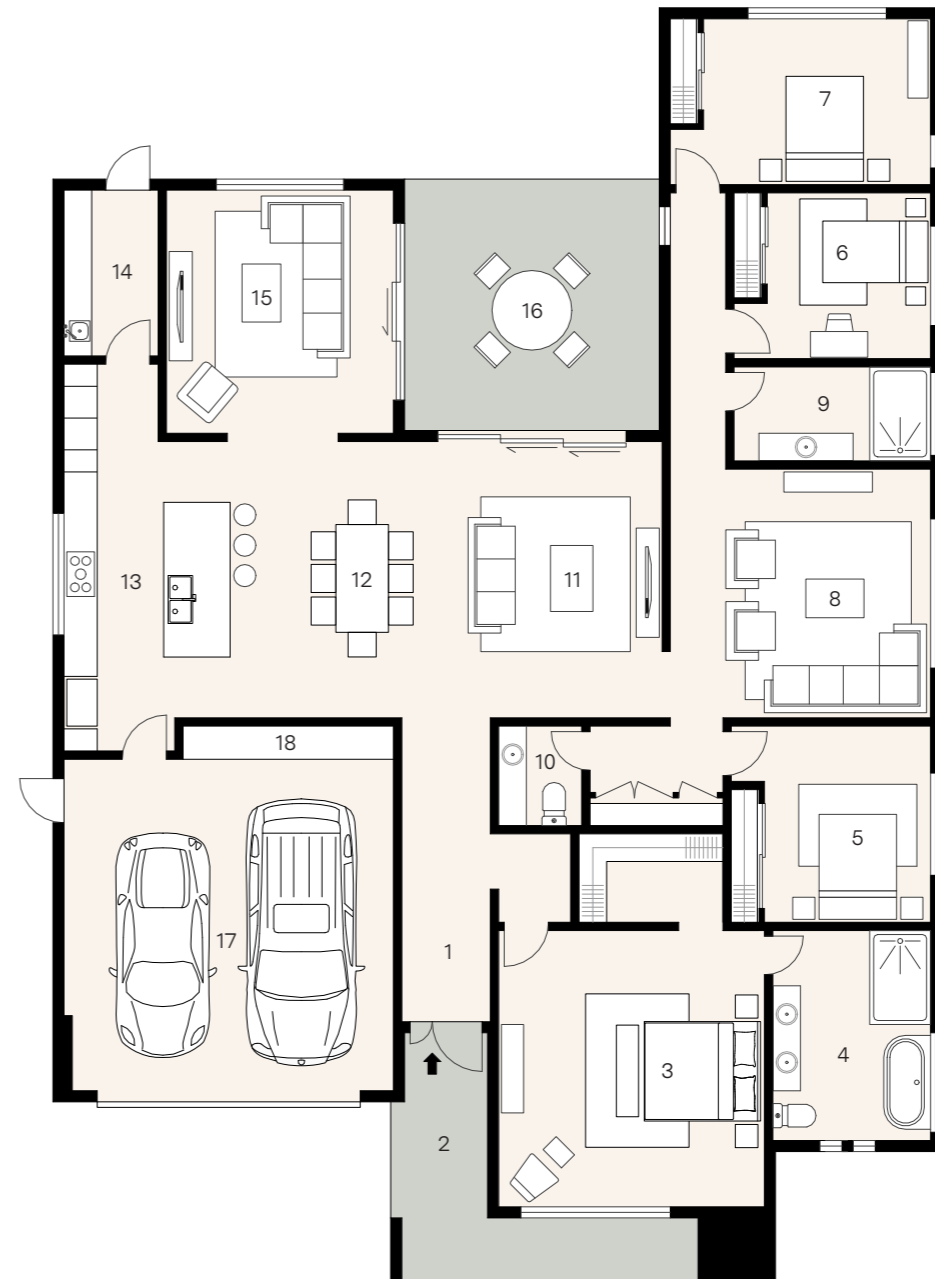
House size 298m² — Land size 651m²

At Norman Estates, a curated collection of elegant SHAWOOD homes pair human-centric design and ingenious engineering for ultimate liveability. These homes have been designed by Sekisui House to work in harmony with each other and the surrounding landscape.

This unique home features an intuitive floorplan that maximises movement between the integrated living zones and generous outdoor alfresco area. An intelligent combination of form and function, this generously proportioned single storey home has been luxuriously appointed with premium appliances and finishes. Striking architectural features such as flawless square set finished ceilings take this family home to another level.



McKinnon Circuit



1.	Entry	
2.	Porch	1.9 x 4.3
3.	Principal	4.7 x 5.0
4.	Ensuite	2.8 x 3.8
5.	Bed 2	3.0 x 3.1
6.	Bed 3	3.5 x 3.0
7.	Bed 4	4.1 x 3.0
8.	Family	4.7 x 4.5
9.	Bath	3.6 x 1.7
10.	Powder	1.5 x 1.8
11.	Living	4.7 x 5.0
12.	Dining	3.0 x 5.0
13.	Kitchen	3.0 x 7.0
14.	Laundry	1.7 x 3.0
15.	Lounge	4.1 x 4.4
16.	Alfresco	4.3 x 4.6
17.	Garage	5.9 x 6.4
18.	Workshop	3.0 x 0.6