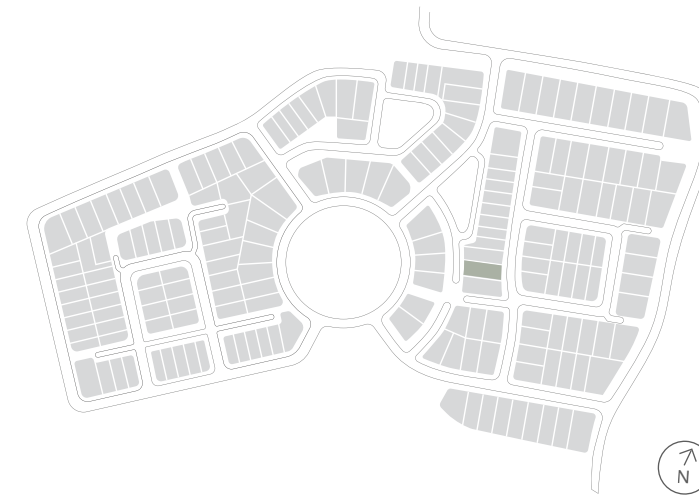


House Type NE47

Why live  
without?



Lot 75 Jamiesons Avenue  
Gledswood Hills

# Lot 75 Jamiesons Avenue Gledswood Hills

SHAWOOD



## House Type NE47 F1

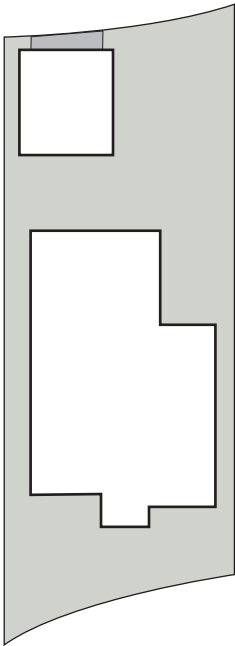
5 3 2

House size 403m<sup>2</sup> — Land size 566m<sup>2</sup>

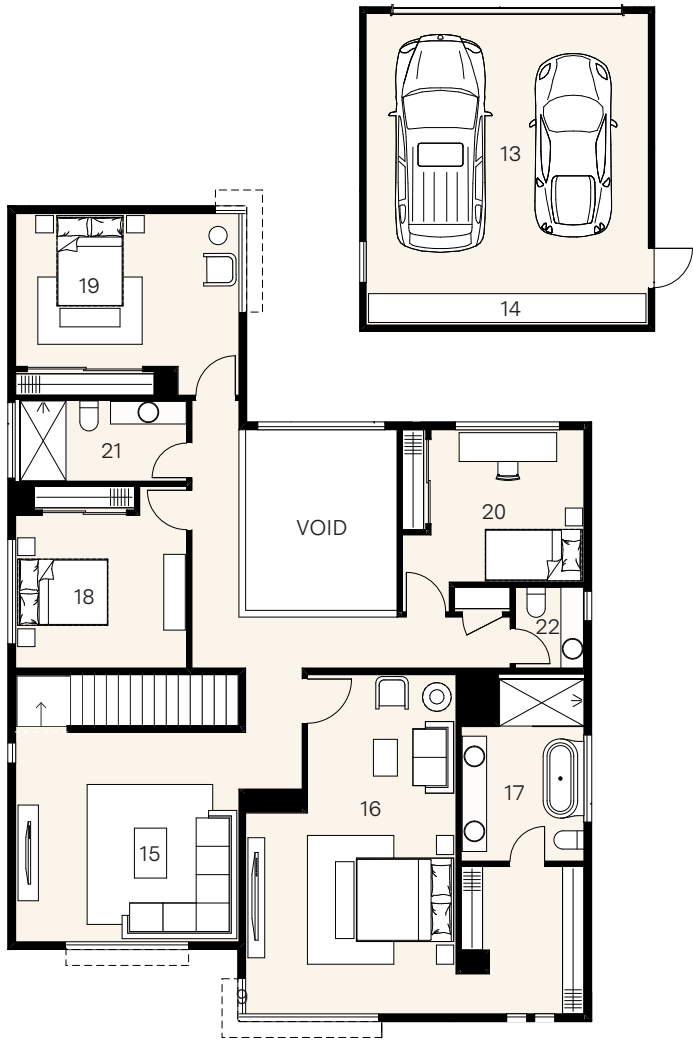
At Norman Estates, a curated collection of elegant SHAWOOD homes pair human-centric design and ingenious engineering for ultimate liveability. These homes have been designed by Sekisui House to work in harmony with each other and the surrounding landscape.

Set across two expansive levels, this unique home intelligently combines form and function with an intuitive floorplan that maximises movement between the integrated living zones and generous outdoor alfresco area. Distinctive architectural features such as a soaring light-filled void finished with flawless square set cornices provide an elevated aesthetic rarely experienced. Luxuriously appointed with premium appliances and finishes, this is a home that has been built for a lifetime of comfort, health and wellbeing.

Valencia Place

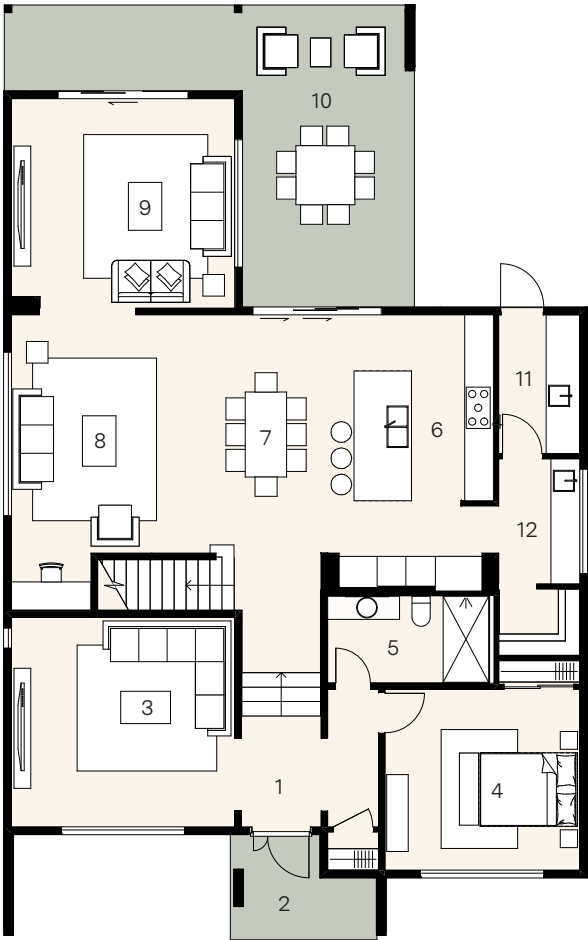


Jamiesons Avenue



### First floor

15.	Retreat	4.4 x 4.7
16.	Principal	7.1 x 4.4
17.	Ensuite	3.8 x 2.6
18.	Bed 2	3.2 x 3.6
19.	Bed 3	3.2 x 4.7
20.	Bed 4	3.2 x 3.2
21.	Bath	1.7 x 3.5
22.	Powder	1.7 x 1.4



### Ground floor

1.	Entry	
2.	Porch	2.2 x 3.1
3.	Lounge	4.4 x 4.7
4.	Bed 5	3.8 x 4.1
5.	Bath	1.8 x 3.4
6.	Kitchen	5.7 x 3.2
7.	Dining	5.0 x 3.0
8.	Living	5.0 x 3.8
9.	Family	4.4 x 4.7
10.	Alfresco	6.3 x 8.6
11.	Laundry	2.9 x 1.7
12.	Butler's pantry	2.6 x 1.7
13.	Detached garage	5.9 x 5.9
14.	Workshop	0.6 x 5.9