

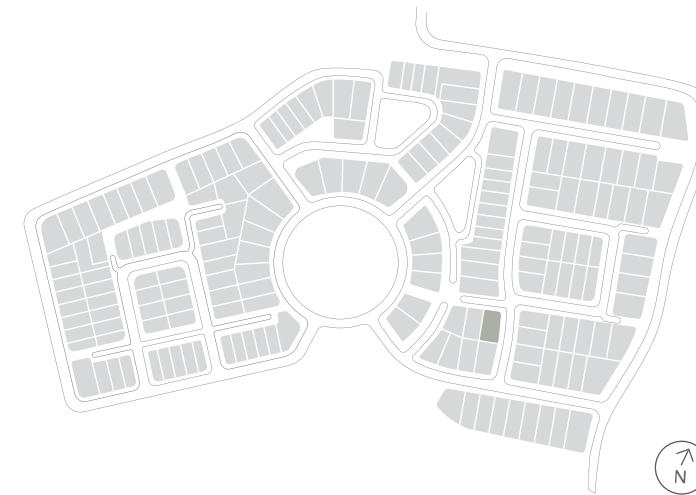
House Type NE40A



NORMAN ESTATES

AT GLEDSDOOD HILLS

Why live
without?



Lot 77 Celito Walk
Gledswood Hills

Lot 77 Celito Walk Gledswood Hills

SHAWOOD



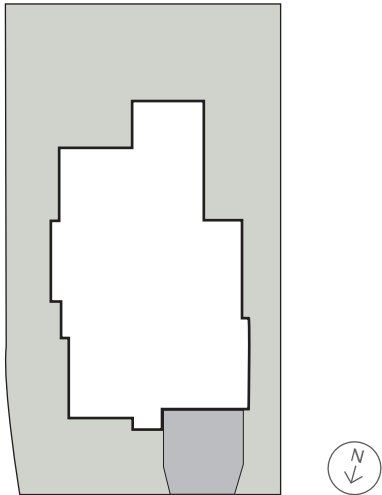
House Type NE40A F1

5 2 2

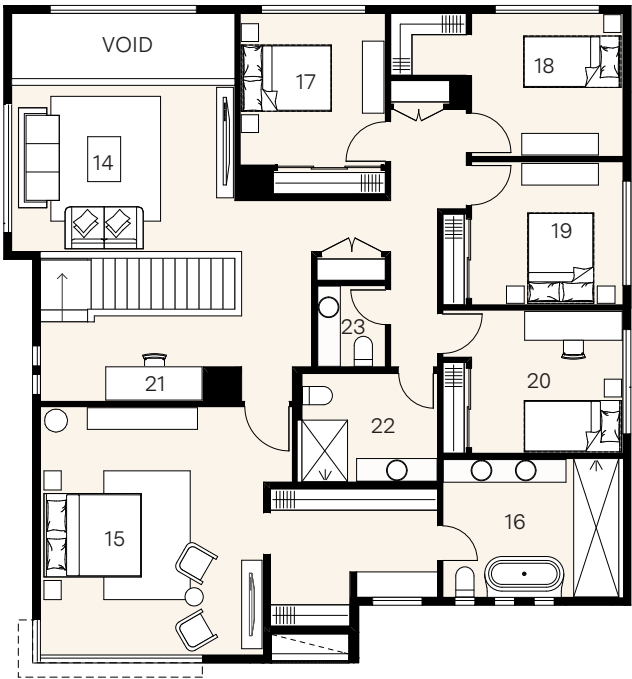
House size 384m² — Land size 573m²

At Norman Estates, a curated collection of elegant SHAWOOD homes pair human-centric design and ingenious engineering for ultimate liveability. These homes have been designed by Sekisui House to work in harmony with each other and the surrounding landscape.

Set across two expansive levels, this unique home intelligently combines form and function with an intuitive floorplan that maximises movement between the integrated living zones and generous outdoor alfresco area. Distinctive architectural features such as a soaring light-filled void finished with flawless square set cornices provide an elevated aesthetic rarely experienced. Luxuriously appointed with premium appliances and finishes, this is a home that has been built for a lifetime of comfort, health and wellbeing.

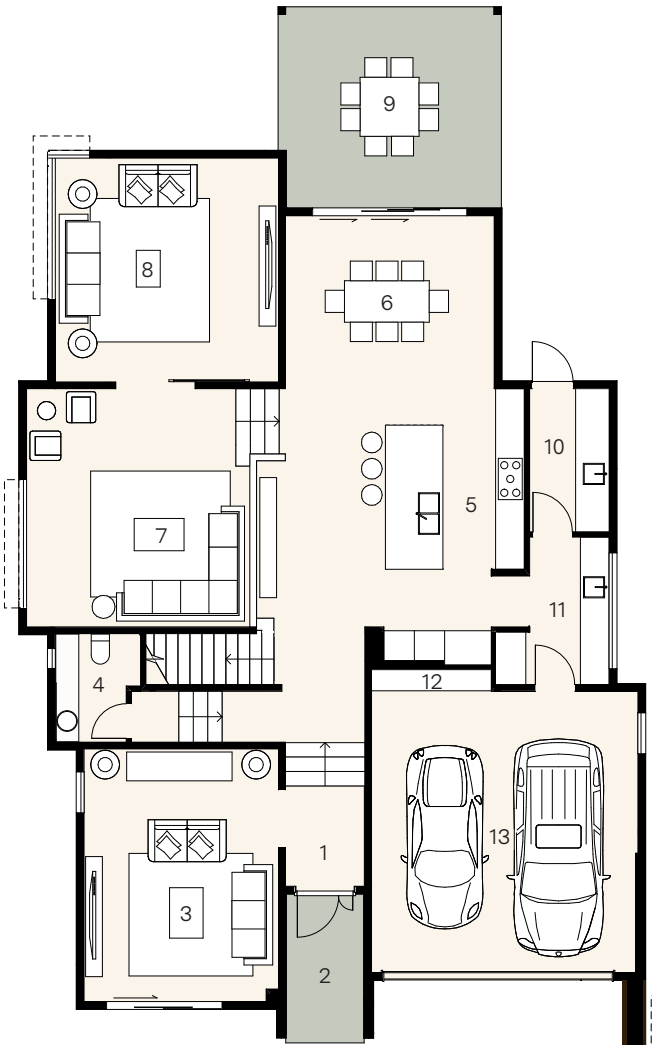


Celito Walk



First floor

14.	Retreat	4.7 x 3.5
15.	Principal	4.7 x 5.2
16.	Ensuite	3.8 x 2.9
17.	Bed 2	3.0 x 3.2
18.	Bed 3	3.2 x 3.0
19.	Bed 4	3.2 x 3.0
20.	Bed 5	3.2 x 3.0
21.	Study	3.4 x 1.7
22.	Bath	2.8 x 2.3
23.	Powder	1.4 x 1.7



Ground floor

1.	Entry	
2.	Porch	3.1 x 1.6
3.	Lounge	5.3 x 4.1
4.	Powder	2.3 x 1.8
5.	Kitchen	5.7 x 2.9
6.	Dining	3.6 x 4.4
7.	Living	5.0 x 4.7
8.	Family	4.7 x 4.7
9.	Alfresco	4.2 x 4.7
10.	Laundry	3.0 x 1.7
11.	Butler's pantry	3.1 x 1.7
12.	Workshop	0.4 x 2.5
13.	Garage	5.9 x 5.6