

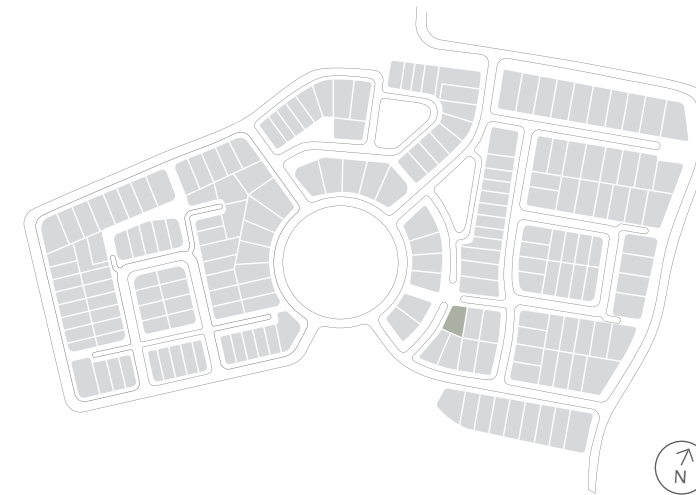
House Type NE48



NORMAN ESTATES

AT GLEDSDOOD HILLS

Why live
without?



Lot 79 Celito Walk
Gledswood Hills

Lot 79 Celito Walk Gledswood Hills

SHAWOOD



Artist Impression

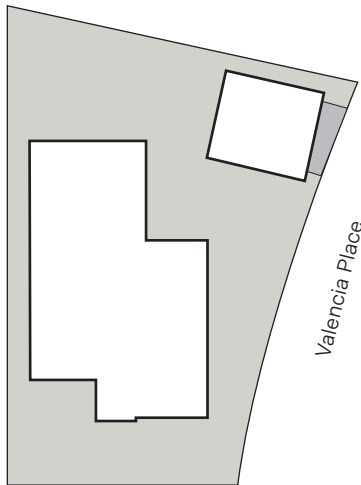
House Type NE48 F1

5 3 2

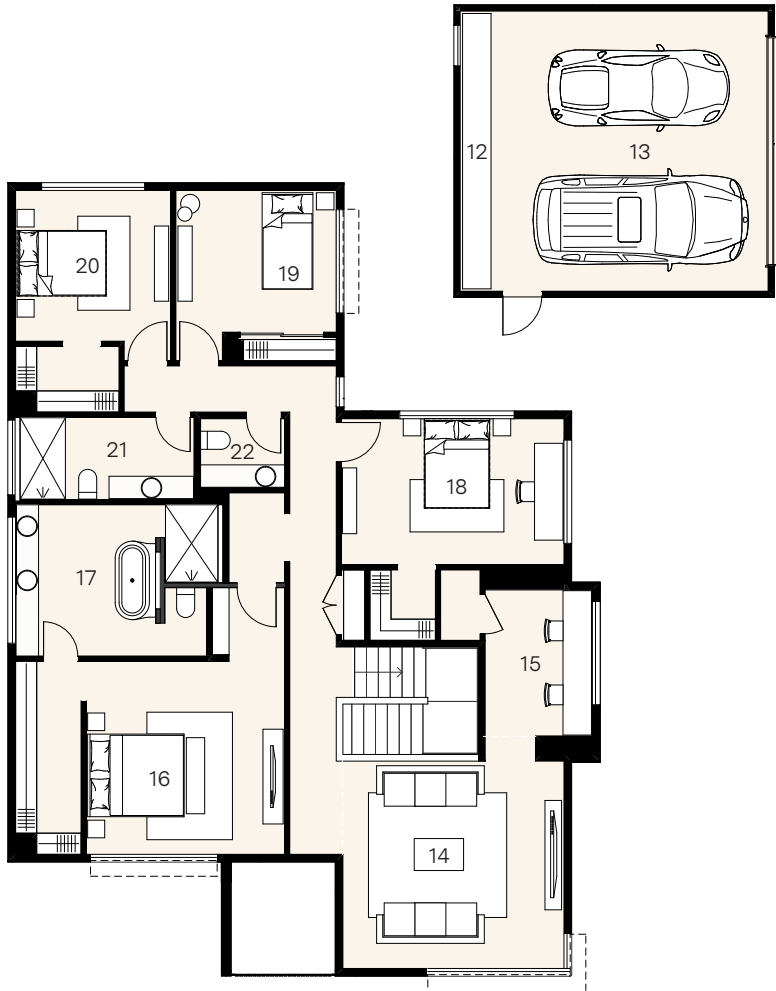
House size 385m² — Land size 564m²

At Norman Estates, a curated collection of elegant SHAWOOD homes pair human-centric design and ingenious engineering for ultimate liveability. These homes have been designed by Sekisui House to work in harmony with each other and the surrounding landscape.

Set across two expansive levels, this unique home intelligently combines form and function with an intuitive floorplan that maximises movement between the integrated living zones and generous outdoor alfresco area. Distinctive architectural features such as flawless square set cornices provide an elevated aesthetic rarely experienced. Luxuriously appointed with premium appliances and finishes, this is a home that has been built for a lifetime of comfort, health and wellbeing.

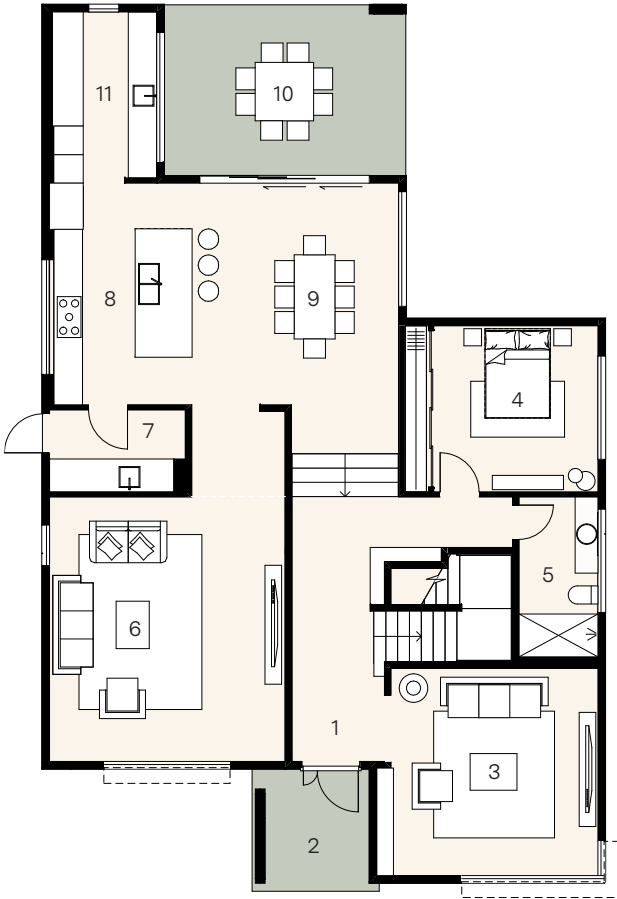


Celito Walk



First floor

14.	Retreat	4.4 x 4.7
15.	Study	3.1 x 2.3
16.	Principal	4.1 x 4.2
17.	Ensuite	3.2 x 4.3
18.	Bed 2	3.1 x 4.7
19.	Bed 3	3.0 x 3.4
20.	Bed 4	3.2 x 3.3
21.	Bath	1.7 x 3.7
22.	Powder	1.5 x 1.8



Ground floor

1.	Entry	
2.	Porch	2.6 x 2.5
3.	Lounge	4.4 x 4.4
4.	Bed 5	3.5 x 3.5
5.	Bath	3.4 x 1.7
6.	Living	5.6 x 5.0
7.	Laundry	1.7 x 2.9
8.	Kitchen	4.7 x 2.9
9.	Dining	4.7 x 4.4
10.	Alfresco	3.6 x 5.1
11.	Butler's pantry	3.6 x 2.2
12.	Workshop	0.6 x 5.9
13.	Detached garage	5.9 x 5.9