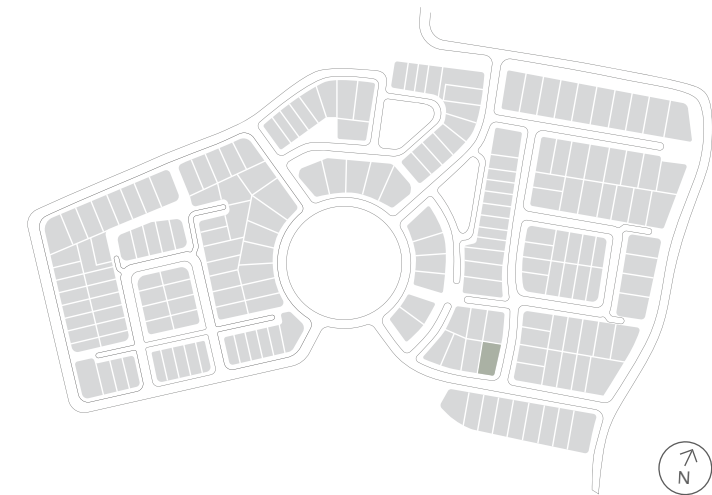


House Type NE40B

Why live  
without?



Lot 83 Florian Boulevard  
Gledswood Hills

# Lot 83 Florian Boulevard Gledswood Hills

SHAWOOD



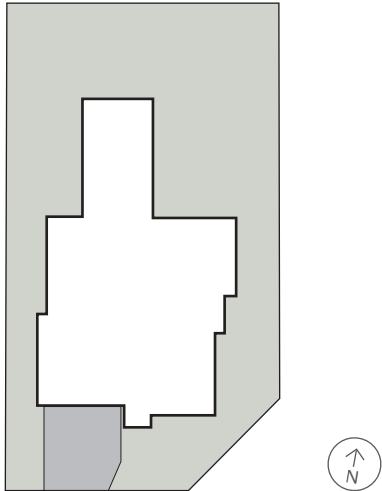
## House Type NE40B F2

5 2 2

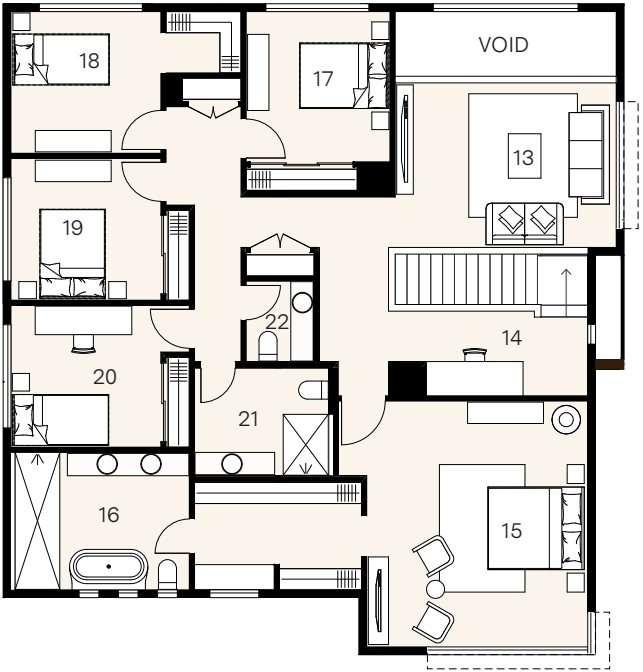
House size 360m<sup>2</sup> — Land size 558m<sup>2</sup>

At Norman Estates, a curated collection of elegant SHAWOOD homes pair human-centric design and ingenious engineering for ultimate liveability. These homes have been designed by Sekisui House to work in harmony with each other and the surrounding landscape.

Set across two expansive levels, this unique home intelligently combines form and function with an intuitive floorplan that maximises movement between the integrated living zones and generous outdoor alfresco area. Distinctive architectural features such as a soaring light-filled void finished with flawless square set cornices provide an elevated aesthetic rarely experienced. Luxuriously appointed with premium appliances and finishes, this is a home that has been built for a lifetime of comfort, health and wellbeing.

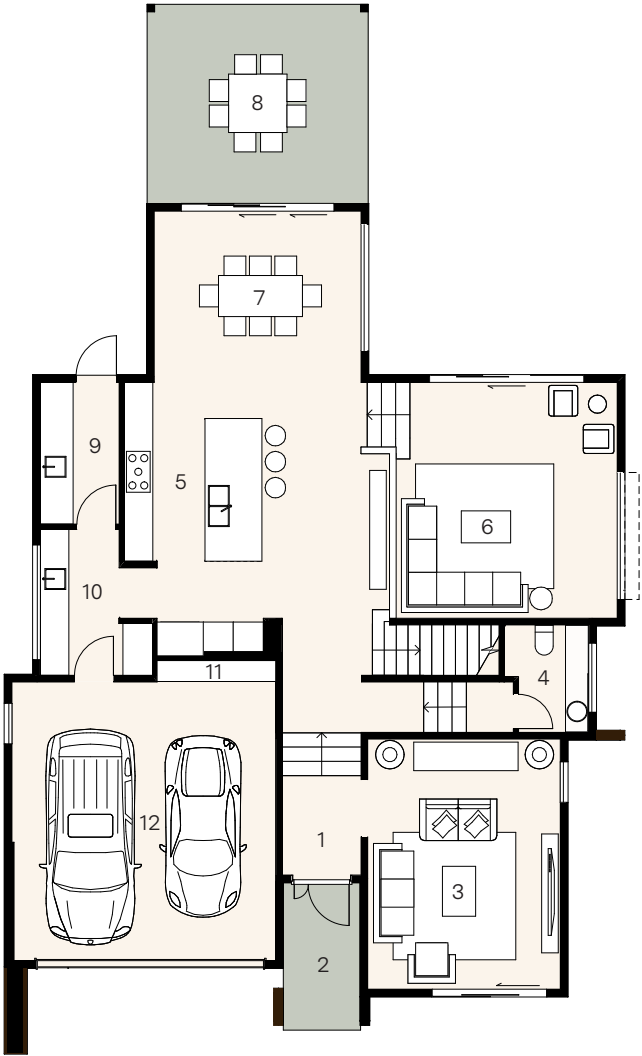


Florian Boulevard



### First floor

13. Retreat	4.7 x 3.5
14. Study	3.4 x 1.7
15. Principal	4.7 x 5.2
16. Ensuite	3.7 x 2.9
17. Bed 2	3.0 x 3.2
18. Bed 3	3.2 x 3.0
19. Bed 4	3.2 x 3.0
20. Bed 5	3.2 x 3.0
21. Bath	2.8 x 2.3
22. Powder	1.4 x 1.7



### Ground floor

1. Entry	
2. Porch	3.1 x 1.6
3. Lounge	5.3 x 4.1
4. Powder	2.3 x 1.8
5. Kitchen	5.7 x 2.9
6. Living	5.0 x 4.7
7. Dining	3.6 x 4.4
8. Alfresco	4.2 x 4.7
9. Laundry	3.0 x 1.7
10. Butler's pantry	3.1 x 1.7
11. Workshop	0.4 x 2.5
12. Garage	5.9 x 5.6