

# Lumia

Phase 1

## 2 BEDROOM + FLEXI

2 2 2

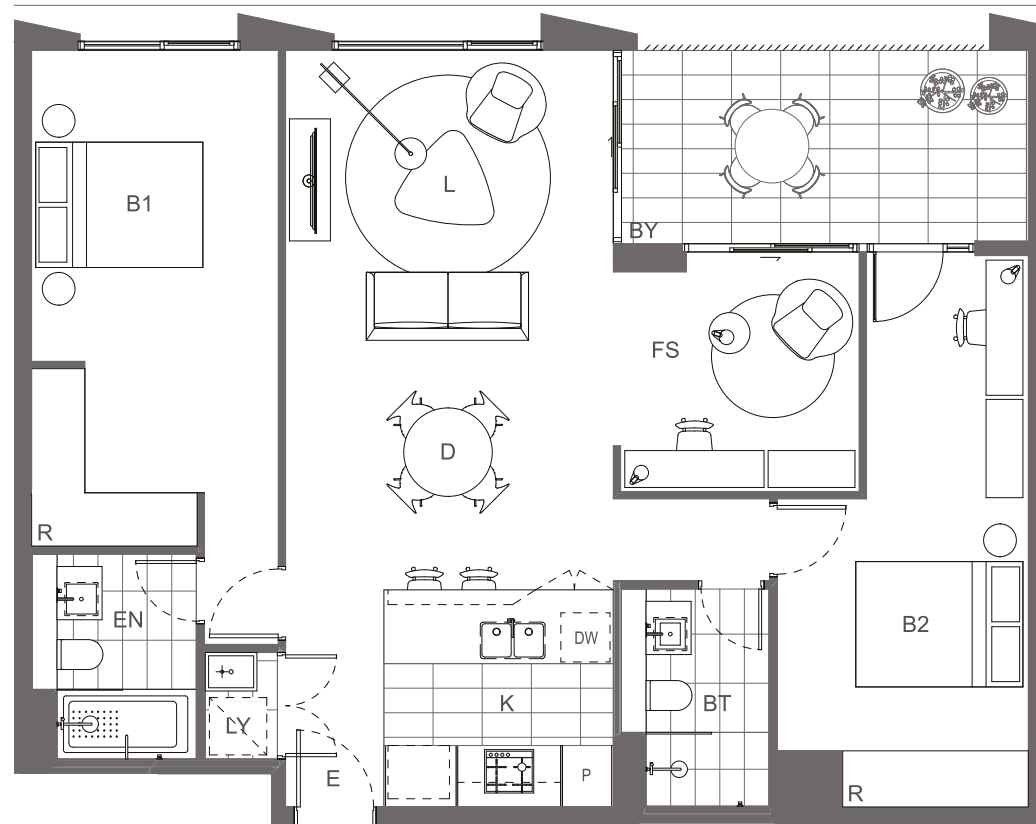
Apartment: 212, 317, 417, 517, 617, 717, 817, 917, 1017

Internal Area	96m <sup>2</sup>
External Area	11m <sup>2</sup>
Total Area	107m <sup>2</sup>



### Key

B1	Bedroom 1	K	Kitchen
B2	Bedroom 2	LY	Laundry
B3	Bedroom 3	L	Living
B4	Bedroom 4	P	Pantry
BT	Bathroom	PL	Planter
BY	Balcony	R	Robe
D	Dining	S	Store
DW	Dishwasher	ST	Study
EN	Ensuite	TC	Terrace
E	Entry	WIR	Walk-in Robe
FS	Flexi Space		



Disclaimer: The particulars are set out as a general outline for the guidance of intending purchasers and do not constitute an offer or contract. All descriptions, dimensions, references to conditions and necessary permutations for use and other details are given in good faith and are believed to be correct, but any intending purchasers should not rely on them as statements or representations of fact, but must satisfy themselves by inspection or otherwise to the correctness of each item, and where necessary seek advice. No third party supplier or their agents has any authority to make or give any representations or warranty in relation to this property. \*External areas may be larger for courtyard apartments. Refer to the detailed area schedule.