

Find the one to call home.



Lot 4906 Georgina
Crescent, Marsden Park
NSW 2756



Elara

Key Specifications

- Reconstituted stone bench tops
- Fisher & Paykel appliances including dishwasher
- Ducted air conditioning system with two zones
- Carpet and floor tiles throughout
- LED downlights throughout and automatic garage door
- Colourbond roof with roof ventilation system
- Coloured concrete driveway
- Choice of four internal colour palettes

Dramatic architecture and expansive, light-filled spaces give this double-storey SHAWOOD home timeless appeal. The lounge on entry leads to a spacious integrated kitchen, dining and living area, while the first-floor boasts four large bedrooms positioned around a family retreat. Clutter-free design has been considered with ample storage throughout, and contemporary finishes making this home an absolute pleasure to live in.

Location

Elara is a family-friendly community in the heart of Sydney's fast-growing North-West, with tree-lined streets, 40 hectares of green open space and views to the Blue Mountains.

House Type	Elevation	House Size	Land Size
Type L	1.0	288m ²	363m ²

FIXED House & Land Package Price

\$952,000

SHAWOOD

House Type

Type L

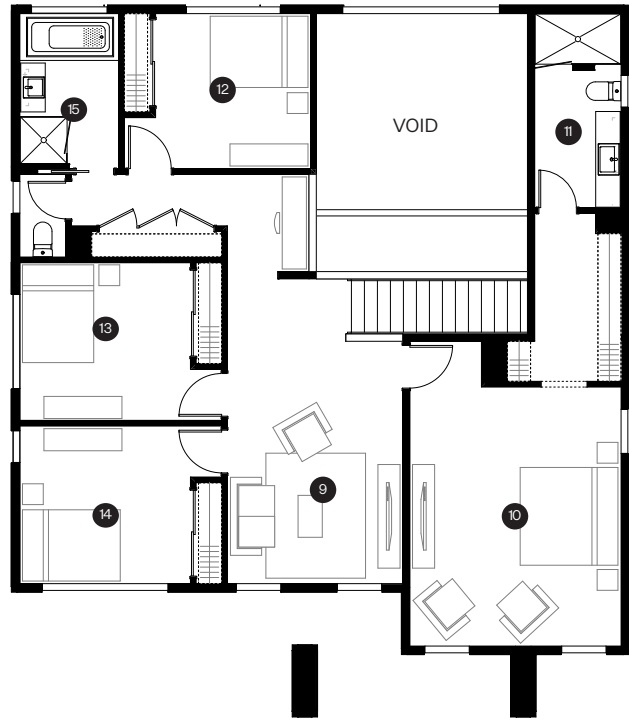


Ground Floor

- 1 Entry
- 2 Lounge 4.2 x 4.1
- 3 Kitchen 3.9 x 2.6
- 4 Dining 5.0 x 2.7
- 5 Living 5.0 x 4.4
- 6 Laundry 2.7 x 1.8
- 7 Powder room 1.6 x 1.8
- 8 Garage 5.9 x 5.6

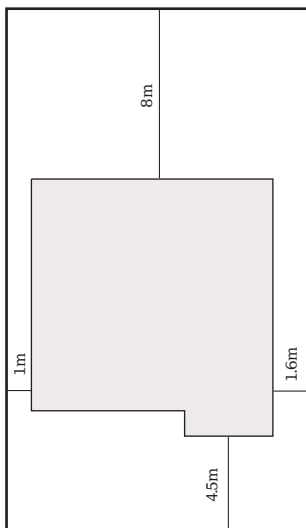
Upper Floor

- 9 Family 4.7 x 3.4
- 10 Principal suite 5.0 x 4.1
- 11 Ensuite 3.7 x 1.7
- 12 Bedroom 2 3.0 x 3.0
- 13 Bedroom 3 3.3 x 3.0
- 14 Bedroom 4 3.3 x 3.0
- 15 Main bath 3.0 x 1.9

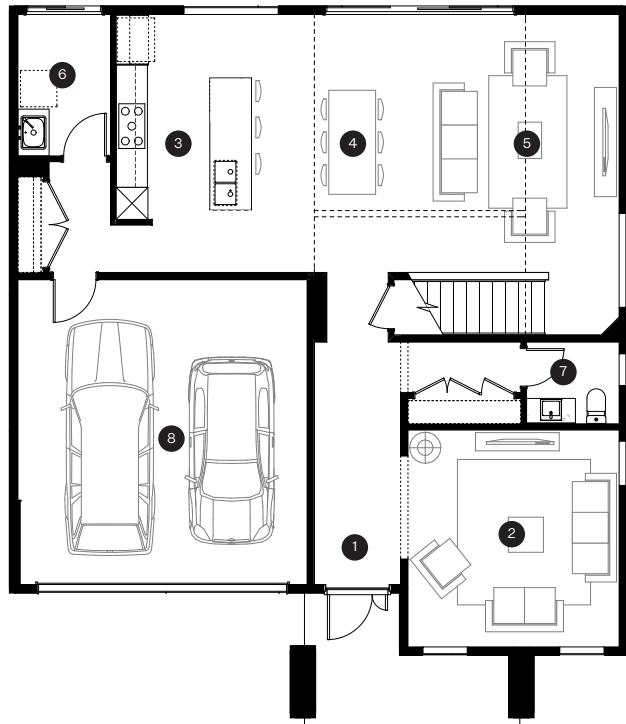


Upper Floor

Site Plan



Georgina Crescent



Ground Floor